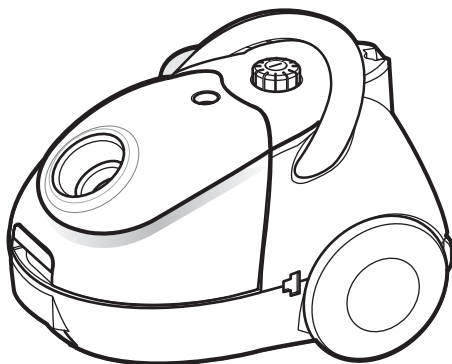


**SAMSUNG**

# Operating Instructions



## ***VACUUM CLEANER***



✧ Before operating this unit, please read the instructions carefully.

Register your product at [www.samsung.com/global/register](http://www.samsung.com/global/register)

## **FEATURES**

---

Features include automatic cord rewind and dust indicator.

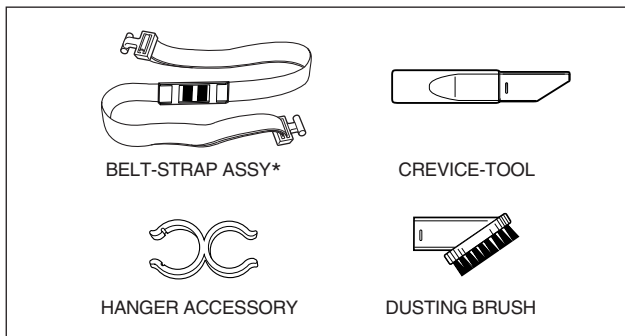
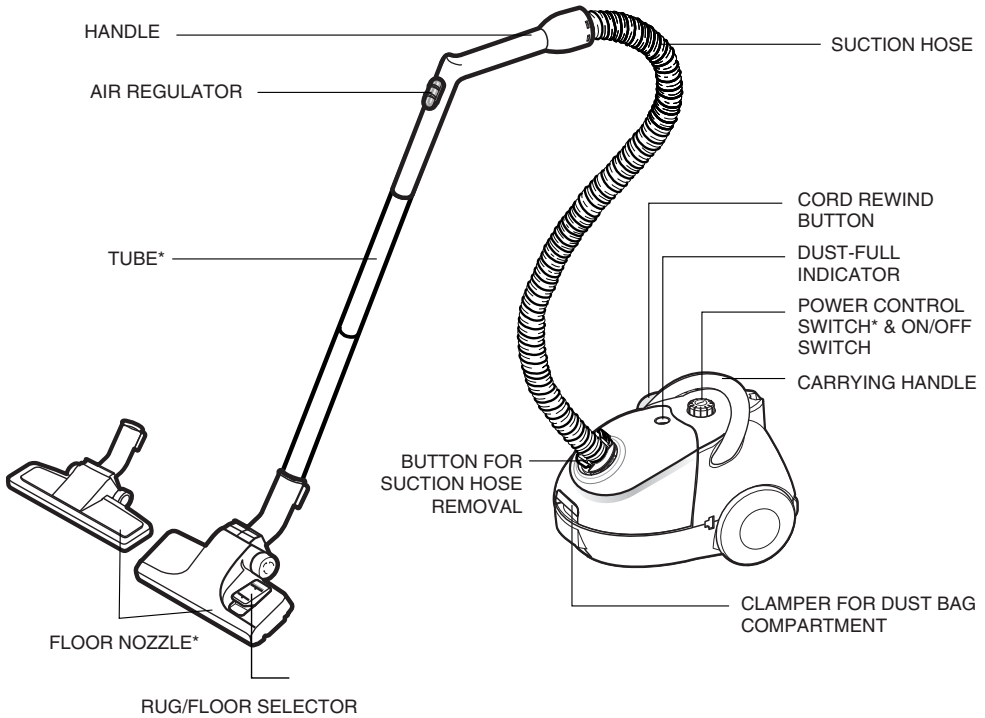
**NOTE** : Not all models have the same features.

## **IMPORTANT SAFEGUARDS**

---

1. Read all instructions carefully. Before switching on, make sure that the voltage of your electricity supply is the same as that indicated on the rating plate on the bottom of the cleaner.
2. **WARNING:** Do not use the vacuum cleaner when rug or floor is wet.
3. Close supervision is necessary when any appliance is used by or near children. Do not allow the vacuum cleaner to be used as a toy. Do not allow the vacuum cleaner to run unattended at any time. Use the vacuum cleaner only for its intended use as described in these instructions.
4. Do not use the vacuum cleaner without a dust bag. Change the dust bag before it is full in order to maintain best efficiency.
5. Do not use the vacuum cleaner to pick up matches, live ashes or cigarette butts. Keep the vacuum cleaner away from stoves and other heat sources. Heat can deform and discolour the plastic parts of the unit.
6. Avoid picking up hard, sharp objects with the vacuum cleaner as they may damage the cleaner parts. Do not stand on the hose assembly. Do not put a weight on the hose. Do not block the suction or the exhaustion part.
7. Switch the vacuum cleaner off at the machine before unplugging from the electrical outlet. Grasp the plug to disconnect from power outlet to avoid damage to cord, plug, prongs or socket. Do not pull the power cord. Always disconnect cord from electrical outlet before changing the dust bag.
8. The use of an extension cord is not recommended.
9. If your vacuum cleaner is not operating correctly, switch off the power supply and consult an authorized service agent.
10. If the supply cord is damaged, it must be replaced by the manufacturer or its service agent or a similarly qualified person in order to avoid a hazard.

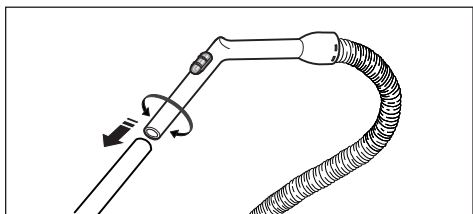
## IDENTIFICATIONS OF PARTS



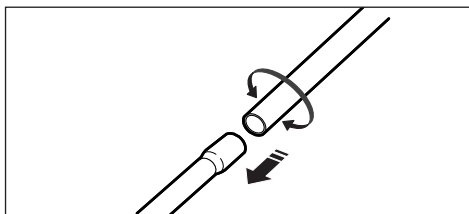
► Features marked \* may vary according to model.

## ASSEMBLING THE VACUUM-CLEANER READY FOR USE

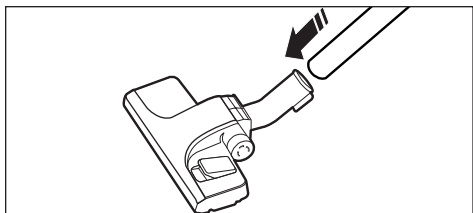
1) Connect the suction hose to the suction tube.



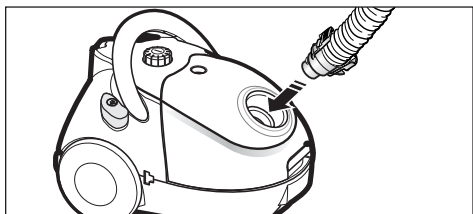
2) Connect the suction tubes together (depending on model).



3) Connect the nozzle to the suction tube.

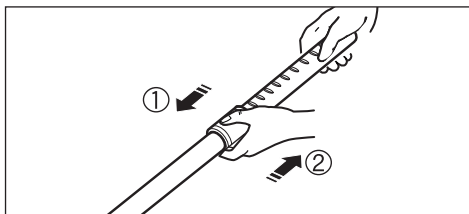


4) Grip the body connector with one hand and squeeze the tube in an inward direction.



### OPTION :

- ① **EXTENDING** : Holding the narrow part of the telescopic tube with one hand, pull the handle in the opposite direction with your other hand.
- ② **SHORTENING** : Holding the narrow part of the telescopic tube with one hand, push the handle towards it using the other hand.  
- Adjustable telescopic tube not available with all models.



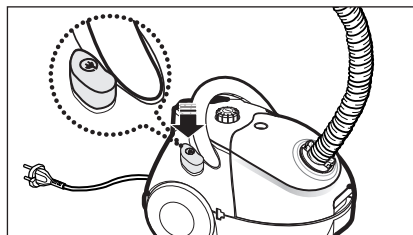
## POWER CORD

### 1) PULLING OUT

The power cord is long enough to be drawn out for convenience.

### 2) REWINDING

When you have finished cleaning, disconnect the plug from the electrical outlet and simply press the cord rewind button lightly with your toe.

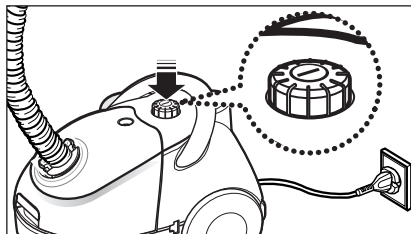


**NOTE** : When removing the power cord from the electrical outlet, grasp the plug, not the cord.

## ON/OFF SWITCH

With the cord plugged into an electrical outlet, start or stop the vacuum cleaner by pushing lightly downward on the switch.

**NOTE :** ON/OFF switch is combined with POWER CONTROLLER - To start or stop the unit just lightly press it downward.



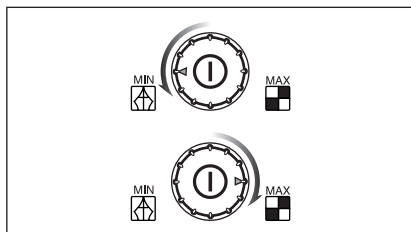
## POWER CONTROL(VARIABLE CONTROL TYPE ONLY)

The vacuuming power can be adjusted to suit any situation with the electrical power control.

**MIN** = For delicate fabrics, e.g.net curtains.

**MAX** = For hard floors and heavily soiled carpets.

-To adjust power output just turn it right or left.



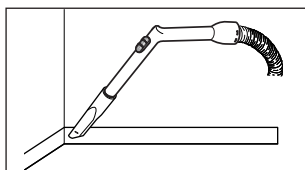
## DUST-FULL INDICATOR

If the "Dust-Full" indicator changes to "RED" while you are cleaning, the dust bag requires replacement.

**NOTE :** If the "Dust-Full" indicator continues to display "RED" even after changing the dust bag, turn the cleaner off and check whether the hose, tube or nozzle is clogged.

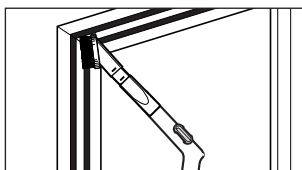
## USING THE ACCESSORIES

### CREVICE

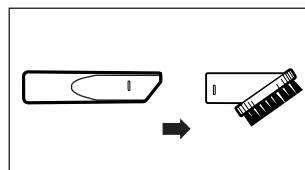


Crevice tool for radiators, crevices, corners, between cushions.

### DUSTING



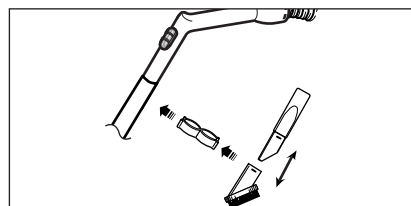
Dusting brush for furniture, shelves, books, etc.



• Before use, assemble the dusting brush to the crevice tool

## TOOL STORAGE

Your cleaner features a tool storage device. Assemble the accessory hanger on to the extension tube. It can be used to store the cleaning tools while they are not in use. This tool can be separated into two parts.



## USING & ASSEMBLING THE STRAP(OPTIONAL)

This appliance is designed to be conveniently carried on your waist using the belt-strap accessory. When cleaning steps, curtains, shelves, etc, you can carry the unit with the strap over your shoulder.



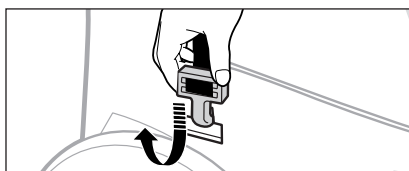
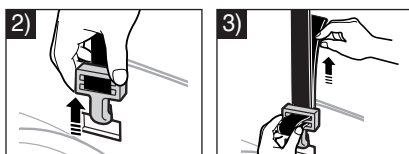
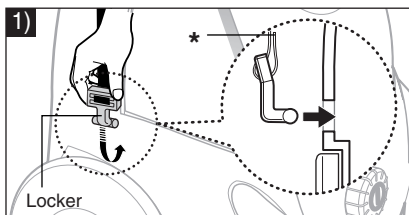
### ► Ready for use

1) Insert the lockers into the holes on the cleaner, taking care of the lockers' direction.

\*Strap-ends should face the body of the cleaner.

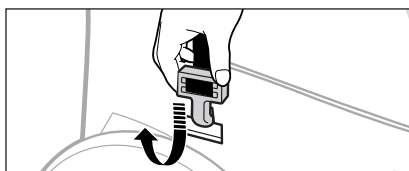
2) Pull the lockers to the front of the cleaner until they click into place.

3) Adjust the strap length to fit your body.



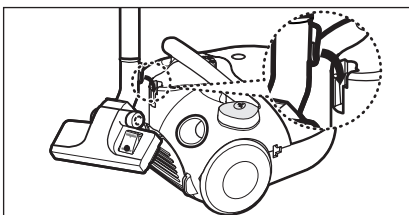
### ► When not using the strap

- Detach the lockers by pushing them down and drawing them out from the unit.
- Keep the strap separately for the next time you want to use it.



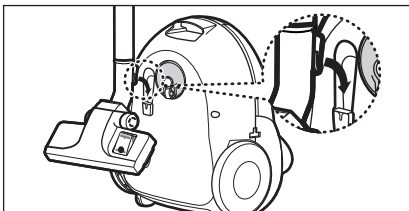
## PARK POSITION

Located on the top rear side of the vacuum-cleaner, there is a nozzle support that can be used to park the nozzle during pauses in cleaning.



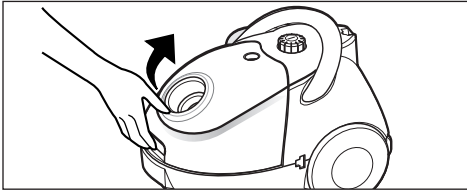
## TRANSPORTING AND STORING THE VACUUM CLEANER

For easy storage and transportation, this vacuum cleaner has a clip system built onto the body, which will keep the tube, hose and nozzle in a vertical position.

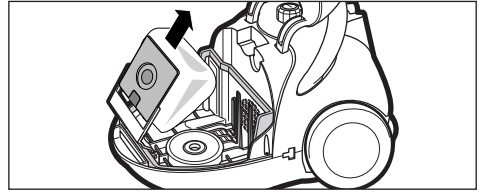


## REPLACING THE DUST BAG

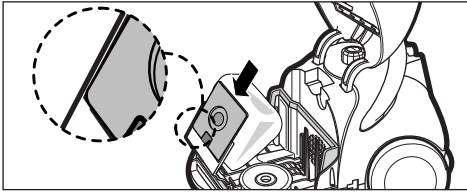
1) To open the dust cover of the dust bag compartment, press the clamber upwards. (The clamber is located at the front of the dust cover)



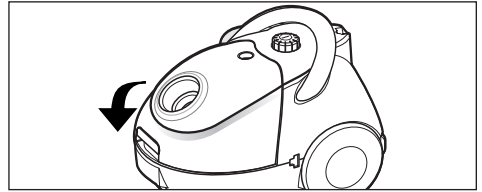
2) Remove the dust bag from the cleaner.



3) After removing the used dust bag, insert the cardboard bag collar of the new dust bag into its original position.



4) Press the dust cover down gently until the clamber relocks.



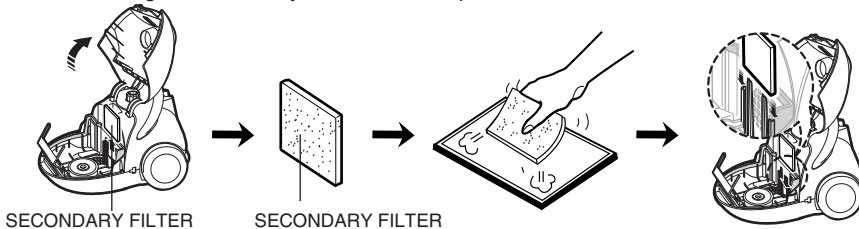
## FOR CLOTH FILTER BAG

After using, if the cloth filter bag is full of dust, clean the cloth filter bag and use it again.

## MAINTENANCE OR REPLACEMENT OF THE FILTERS

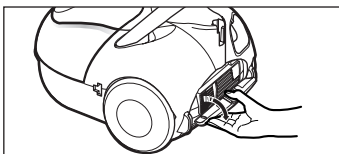
### ► INLET FILTER

To protect the motor, your cleaner features a secondary filter at the front of the motor in the dust compartment. Do not allow the filter to become clogged. Suction power reduction or motor damage may result. After cleaning the secondary filter attach it in place.

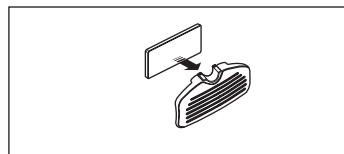


### ► OUTLET FILTER

1) Open the grille part, separate the exhausted filter.



2) Reassemble it after cleaning or replacing the filter in the reverse order.

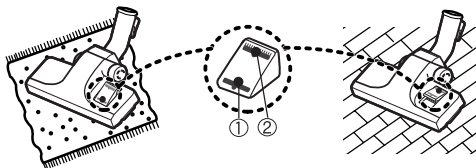


**NOTE:** The filters must be completely dried before being replaced in the dust compartment.

## USAGE OF FLOOR NOZZLE

### FOR RUG / FLOOR SELECTOR

Before use make sure that the position of the selector is in the right position for the type of surface to be cleaned.

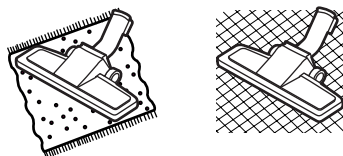


Select the carpet indicator ① when cleaning carpets.

Select flat surface indicator ② when cleaning the floors, tiles, etc.

### FOR UNIVERSAL BRUSH

Use the floor nozzle for cleaning all surfaces.



**NOTE:** For optimum efficiency, clean floor brush with crevice tool.



## TROUBLE SHOOTING

PROBLEM	CAUSE	REMEDY
Motor does not start.	No power supply.	Check cable, plug and socket.
Suction force is gradually decreasing.	Filter, nozzle, suction hose or tube is blocked.	Remove the object.
Cord does not rewind fully.	Check that the cord is not twisted or wound unevenly.	Pull the cord out 2~3m & push down the cord rewind button.

This Vacuum cleaner is approved the following

EMC Directive : 89/336/EEC, 92/31EEC and 93/68/EEC

Low Voltage Safety Directive : 73/23/EEC and 93/68/EEC

If you have any comments or questions regarding a Samsung products, contact the SAMSUNG customer care center.

Country	Customer Care Center ☎	Web Site
U.K	0870 242 0303	<a href="http://www.samsung.com/uk">www.samsung.com/uk</a>
SOUTH AFRICA	0860 7267864 (SAMSUNG)	<a href="http://www.samsung.com/za">www.samsung.com/za</a>