

lenovo

Lenovo A269i

Quick Start Guide v1.0

 Read this guide carefully before using your phone.

Learn More

For “Regulatory Notices” and other useful manuals, please go to <http://support.lenovo.com/>.

Legal notices

Lenovo and the Lenovo logo are trademarks of Lenovo in the United States, other countries, or both.

Other company, product, or service names may be trademarks or service marks of others.

First Edition (September 2013)

© Copyright Lenovo 2013.

Reduce | Reuse | Recycle



81LV740001W
Printed in China

Technical specifications



Model and System

Model: Lenovo A269i

System: Android Ginger Bread



Size and Weight

Height: 117mm Width: 62.5mm Depth: 12.8mm

Weight: 111g



CPU and Capacity

CPU: MTK6572

Capacity: Dual core 1G



Camera

Type: FF Rear Camera

Pixels: 2M



Power and Battery

① Standby time: 450hrs

Battery: 1300mAh (Built-in rechargeable lithium-ion battery)



Display

Size: 3.5"

Resolution: HVGA

Screen: Multi-Touch display

LCD type: IPS



Wireless Communication

② Bluetooth 2.0

WLAN

WCDMA, GSM

- ① Based on actual measurements.
- ② You must be within about 30 feet (10 meters) of a Bluetooth device for it to be connected to the phone.

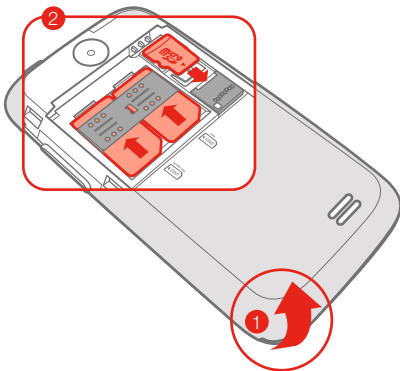
First glance



- | | | |
|------------------|-----------------|----------------|
| 1 Receiver | 2 Microphone | 3 Power on/off |
| 4 Micro USB port | 5 Earphone jack | 6 Rear camera |
| 7 Speaker | 8 Volume down | 9 Volume up |

Installing the SIM card(s) and Memory card

A SIM card provided by your carrier is required in order to use cellular services. A microSD® card can be installed in the device to provide additional storage space for photos, videos, or other files.

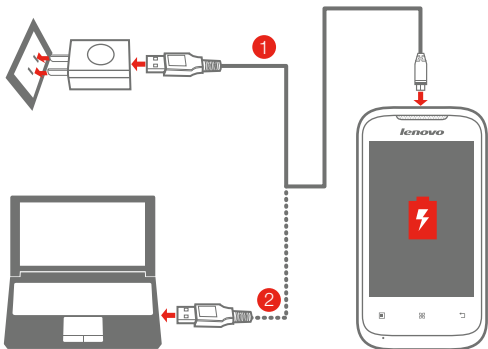


- Step 1.** Hook your fingertip under the back cover and then pry to open the back cover.
- Step 2.** Remove the battery.
- Step 3.** Install the SIM card(s) and memory card as shown in the illustration.
- Step 4.** Replace the battery and the back cover.

- Keep the battery dry and away from any liquid since this may cause a short circuit.
Keep the battery away from fire since this may cause the battery to explode.


Charging the battery


Charge the battery as shown.



Method 1. Connect your phone to a power outlet using the included cable and USB power adapter. or

Method 2. Charge the battery using a computer.

 Low battery

 Fully charged

 Charging

 For more information about battery safety, see the *Important Product Information Guide*.