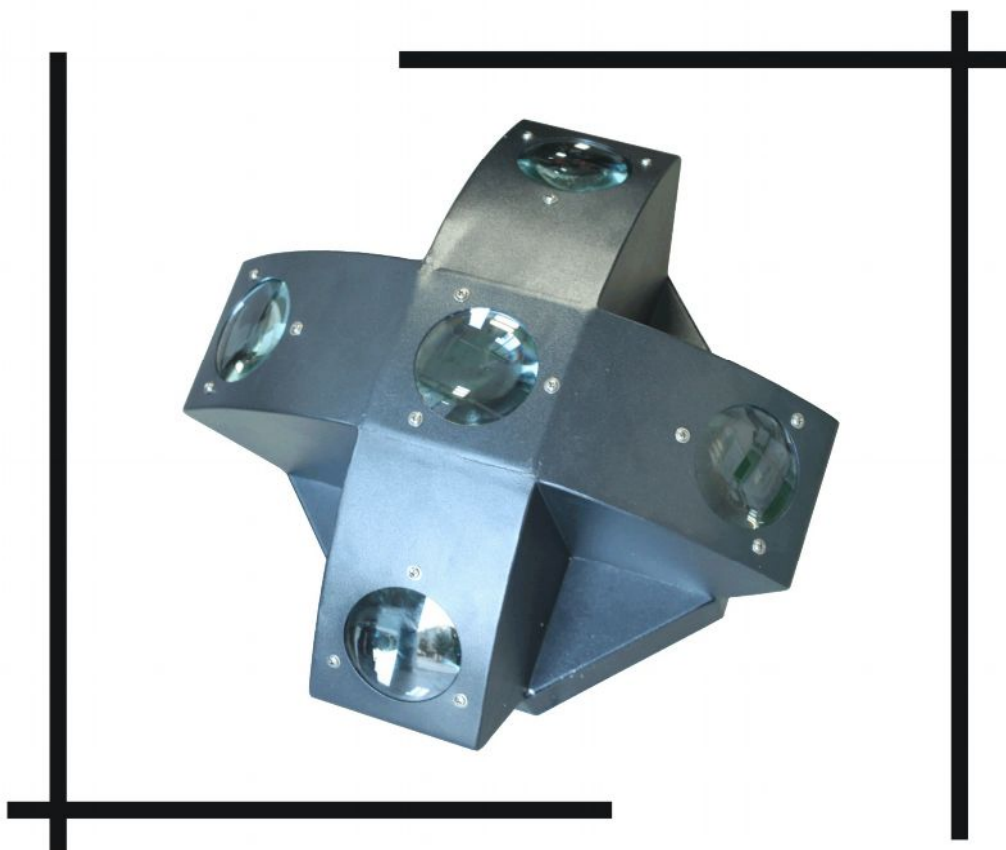


INVOLIGHT

DMX LED motor rocket II



LEDRX500

USER MANUAL

DMX LED motor rocket II Manual

Our DMX LED 5-eye laser effect light offers many possibilities to achieve very nice laser effects which you want. It is specially designed for the stages, disco, night clubs etc. Please read the manual before operation.



A.SPECIFICATION:

1. Size:260*355*355mm
2. Weight:5.2kg
3. Power consumption:35W
4. Power input:AC110~240V,50/60HZ
5. LEDs:320pcs(80R,80G,80B,40W,40Y)5mm
6. Built-in programs,auto running,DMX mode,M/S,sound-active mode,static color
7. Selectable 2,3 DMX channels
8. Very good crossing and chasing LED laser effects
9. Inner box: 31.5×41×41cm
10. Master carton: 43×43×66cm
11. 2 pcs/ctn

B.OPERATION:

1.Built-in programs mode

- 1、 Press MODE button ,enter built-in program menu “Pr.××”
- 2、 Press UP or DOWN button ,select the effect programs Pr.01~Pr.42
- 3、 Press SETUP button ,enter setup speed program menu “SP××”
- 4、 Press UP or DOWN button ,setup speed value SP01~SP100 (FL)
- 5、 Press SETUP button ,enter setup flash program menu “FS××”
- 6、 Press UP or DOWN button ,setup flash value FS00~99

2.Auto run mode

- 1、 Press MODE button ,enter auto run mode menu “AUTO”
- 2、 Press SETUP button ,enter setup auto run mode times menu “n.×××”
- 3、 Press UP or DOWN button ,setup auto run mode times value n.001~n.100
- 4、 Press SETUP button ,enter setup auton run mode speed memu “SP××”
- 5、 Press UP or DOWN button ,setup speed value SP01~SP100 (FL)
- 6、 Press SETUP button ,enter setup auto run mode flash menu “FS××”
- 7、 Press UP or DOWN button ,setup flash value FS00~99

3.DMX mode

- 1、 Press MODE button ,enter DMX mode menu “d.×××”
- 2、 Press UP or DOWN button ,setup DMX address value d.001~d.512
- 3、 Press SETUP button ,enter setup DMX mode d.-P×
- 4、 Press UP or DOWN button ,setup DMX mode d.-P1~ d.-P2

DMX model: d.-P1

CH1			CH2	CH3
NO.	DMX value	FUNCTION	SPEED	FLASH
1	0	OFF	NO USE	NO USE
2	1—5	PROGRAM01	SPEED 0--255	FLASH 0--255
3	6—11	PROGRAM02		
4	12—17	PROGRAM03		
5	18—23	PROGRAM04		
6	24—29	PROGRAM05		
7	30—35	PROGRAM06		
8	36—41	PROGRAM07		
9	42—47	PROGRAM08		
10	48—53	PROGRAM09		
11	54—59	PROGRAM10		
12	60—65	PROGRAM11		
13	66—71	PROGRAM12		
14	72—77	PROGRAM13		
15	78—83	PROGRAM14		
16	84—89	PROGRAM15		
17	90—95	PROGRAM16		
18	96—101	PROGRAM17		
19	102—107	PROGRAM18		
20	108—113	PROGRAM19		
21	114--119	PROGRAM20		
22	120—125	PROGRAM21		
23	126—131	PROGRAM22		
24	132—137	PROGRAM23		
25	138—143	PROGRAM24		
26	144—149	PROGRAM25		
27	150—155	PROGRAM26		
28	156—161	PROGRAM27		
29	162—167	PROGRAM28		
30	168—173	PROGRAM29		
31	174—179	PROGRAM30		
32	180—185	PROGRAM31		
33	186—191	PROGRAM32		
34	192—197	PROGRAM33		
35	198—203	PROGRAM34		
36	204—209	PROGRAM35		
37	210—215	PROGRAM36		
38	216—221	PROGRAM37		
39	222—227	PROGRAM38		
40	228—233	PROGRAM39		
41	234—239	PROGRAM40		
42	240—245	PROGRAM41		

43	246—251	PROGRAM42		
44	252—255	SOUND	Sensitivity 0--255	NO USE

DMX mode2: d.-P2

CH1			CH2
NO.	DMX Value	FUNCTION	FLASH
1	0	OFF	NO USE
2	1—49	R	FLASH 0--255
3	50—99	G	
4	100—149	B	
5	150—199	Y	
6	200—249	W	
7	250--255	Sound Mode	Sensitivity 0--255

1.M/S mode

Press MODE button ,enter the slave mode “SLAV”

The effect of the master on built-in program ,auto run ,sound active or static color is the same with slave .

2.Sound active

- 1、 Press MODE button ,enter sound active mode “SOUN”
- 2、 Press SETUP mode ,enter setup sound active sensitivity menu “SE.××”
- 3、 Press UP or DOWN button ,setup the value of sound active sensitivity SE.00~SE.31

3.Static color mode

- 1.Press MODE button ,enter static color mode “CL.××”
- 2.Press UP or DOWN button ,select the static color CL.r-, CL.g-, CL.b-, CL.y-, CL.u-.

PS :No any touch the button within 30 seconds ,the LED display will be close ,on the condition ,press any button ,will be show the current state .On the condition ,you can adjustthe mode .

INVOLIGHT